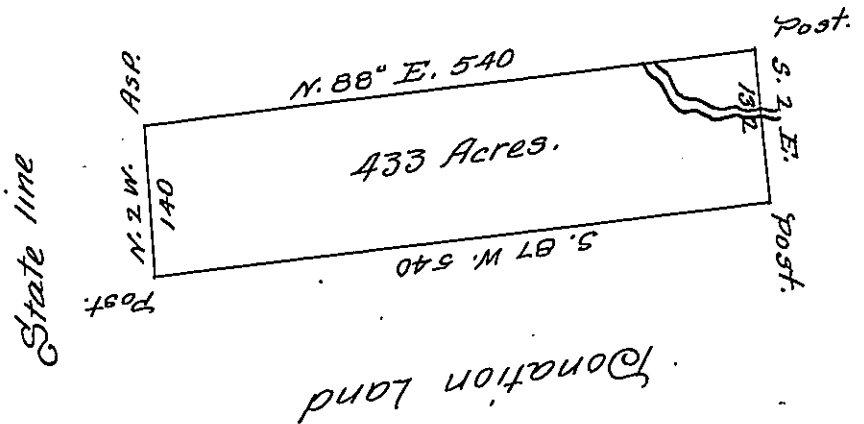


John White, John Wharton



The above is a draught of a survey made the 7th of June 1796 in pursu-
-ance of a Warrant granted Israel Wheelin on the 14th Aprile 1792 Sit-
-uated on the Waters of Big Beaver Creek in Alleghany County Conta-
-ining four hundred and thirty three acres and allowance of six per
centum Called Bedford

Thomas Stokely, D.S.

Daniel Brodhead, Esq.
Surveyor General of Penna.

IN TESTIMONY that the above is a copy of the original remaining on file in
the Department of Internal Affairs of Pennsylvania, made
conformably to an Act of Assembly approved the 16th day of
February, 1833, I have hereunto set my Hand and caused
the Seal of said Department to be affixed at Harrisburg,
this twenty second day of May 1907.

Henry Howell
Secretary of Internal Affairs.